

PRP PANEL FORMWORK SYSTEM

Vertical Construction Application



ENGINEERING | EFFICIENT | MODULAR | RELIABLE

Engineering Next Generation Solutions

www.prpindia.in

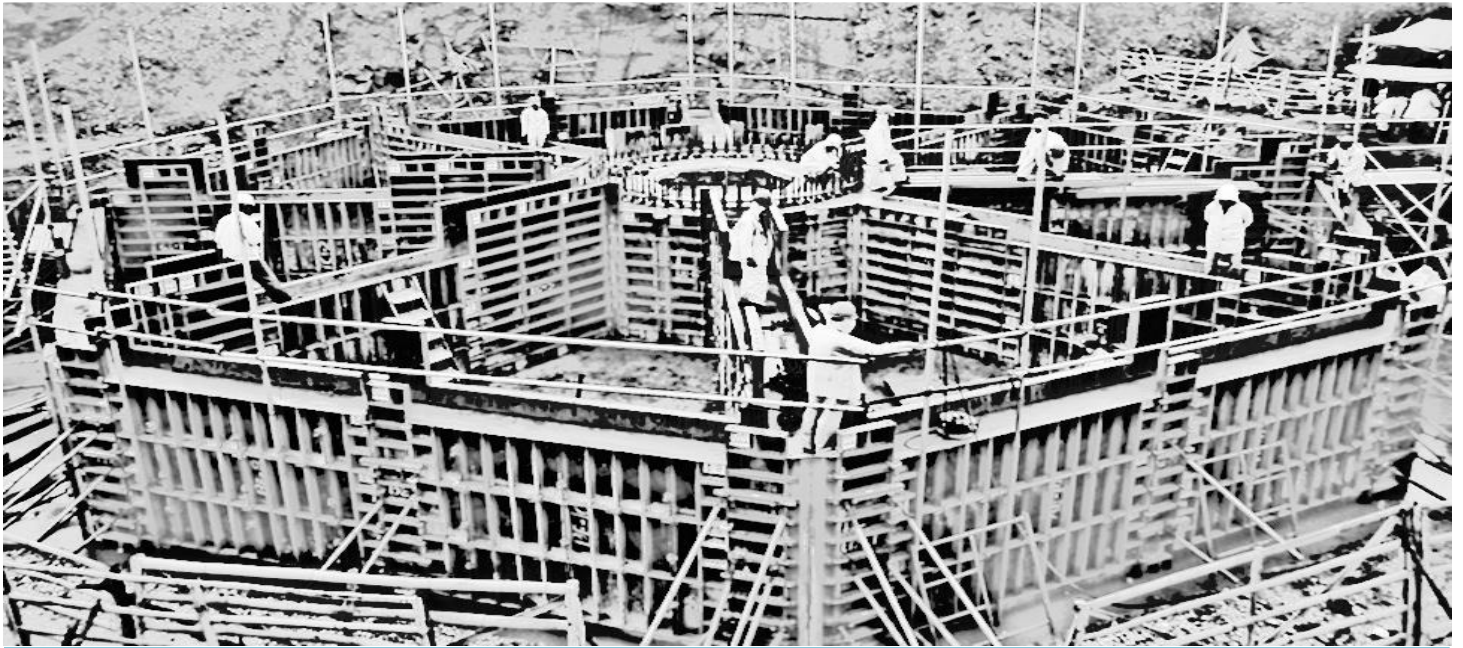
OVERVIEW

PR-50 series Components are designed as per safety standards.

PR-50 the ultimate light weight and robust modular panel formwork system designed for Indian Construction projects where availability of cranes are limited and panel assembling take place manually.

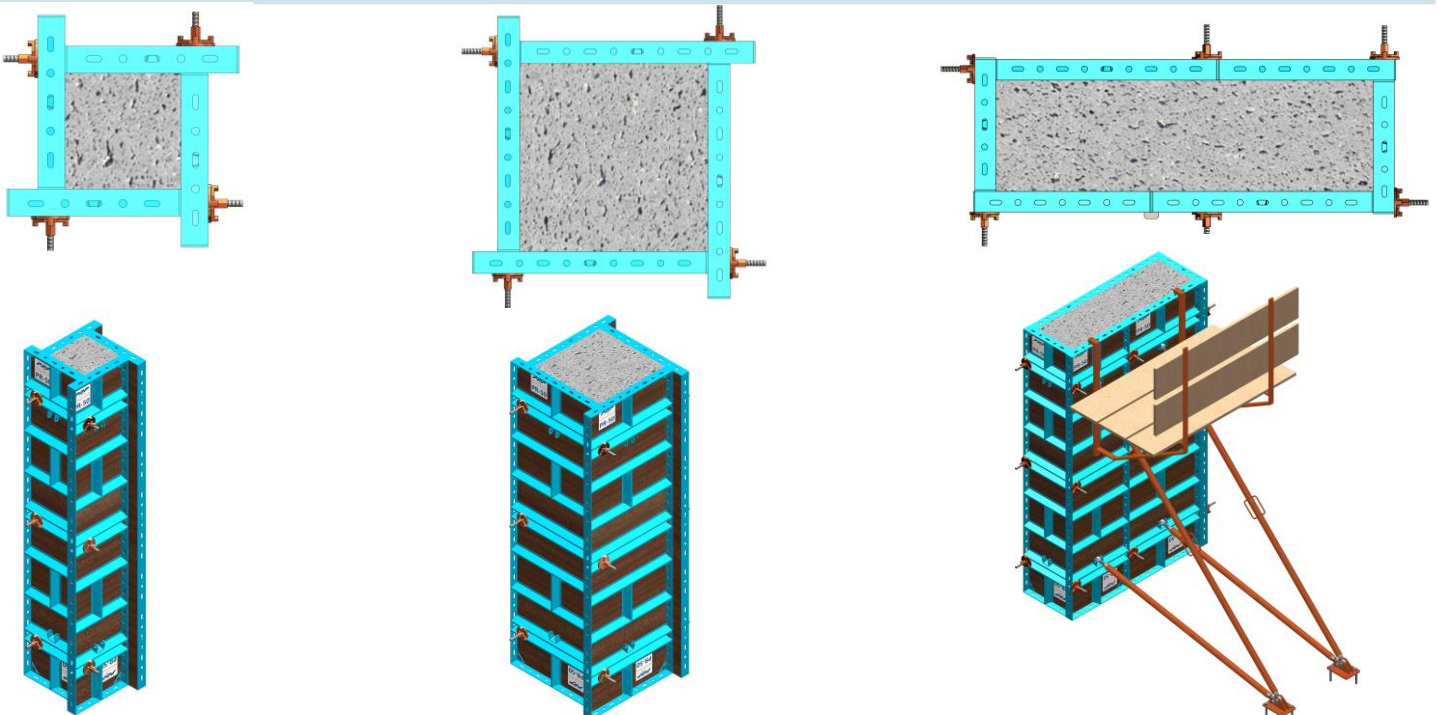
PR-50 is a Pre-Engineered and Pre-Fabricated product use at site extensively and reliable with minimum care at site. A few basic components ensures fast & hassle-free assembling resulting higher productivity and cost-effective formwork solutions for all types of vertical application.

PR-50 is a lightweight steel vertical formwork system that offers flexibility and cost savings on the job site. Panel designed in metric and equipped with a range of sizes; including multi-purpose panels, to bring quality and safety to the job site.



Vertical Construction Application:

Column



PR-50 PANEL SYSTEM

Key feature PR-50

Light Weight :

The Panel weight is just 32 Kg/Sqm making it easy to handle and crane independent

Cost Effective:

High Productivity, less labour, minimum maintenance & extensive self life ensure negligible formwork cost per sqm.

Maximum Repetitions :

12mm thick imported - Birch plywood with 120 GSM phenolic resin ensures maximum no of repetitions.

High Performance:

Designed for the concrete pressure of 50 kN/Sqm for walls and 70 kN/Sqm for columns.

High Productivity:

Pre-Engineered & Pre-Fabricated panels ensures faster assembling & higher 1n productivity with minimum nos. of man-power.

Easy to use:

Only a few basic component ensure easy & hassle- free assembling at site.

Versatile System :

Varieties of Panel Heights & Widths and being all panels are multi panels; any size & shape of structure can be formed.

Yet Economical & Affordable:

Indigenous design & production ensures Economical & Affordable form for all customer.

Long Life:

High quality of production with powder coating surface finish makes the product robust which ensures long life.

Ease Transportation:

Designed for use with the lifting hook holes for efficient loading/unloading of panels when stacked

Panel Dimensions :- Available widths: 0.90m, 0.75m , 0.60m, 0.45m & 0.30m

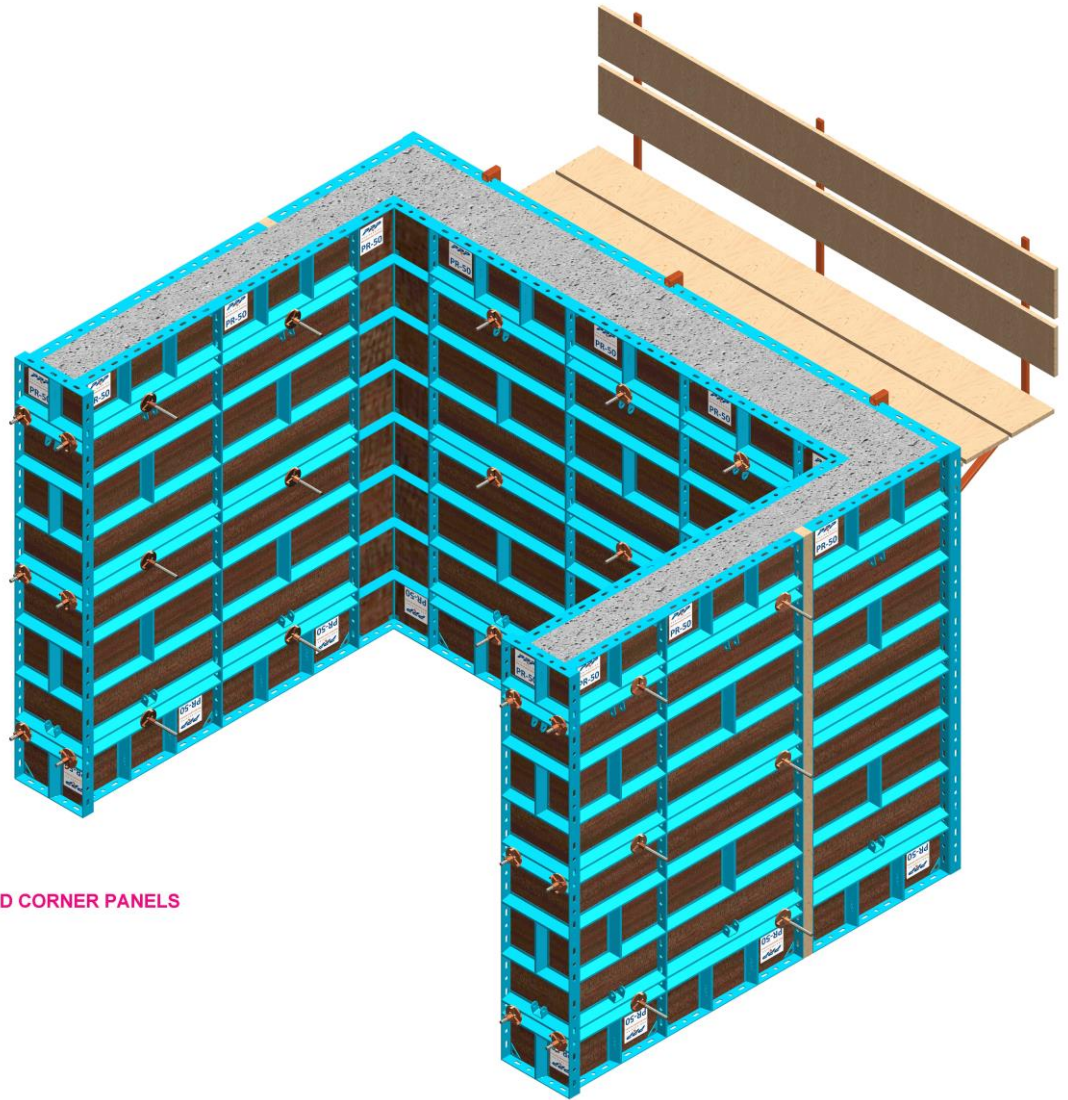
STANDARD PANELS



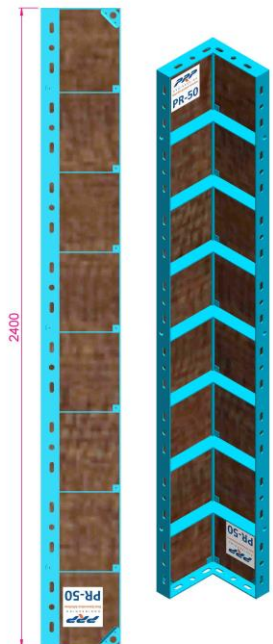
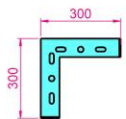
PR-50 PANEL SYSTEM

Panel Dimensions

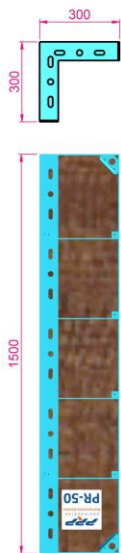
TMT SPIRAL



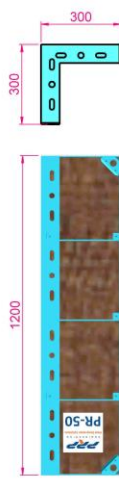
STANDARD CORNER PANELS



2400MM



1500MM



1200MM

Imperial

A wall of innovation in world.

Features that save labor, time, and money

PR-50 systems are best-in-class because of their high-quality design and construction, with accessories, and panel details that allow for efficient concrete forming. The system includes standardized components and accessories that have been tailored to meet the needs of our customers for ease and efficiency. Imperial combines all the features that make PR-50 systems the best solution for a wide variety of job site applications.

Features of the Imperial vertical formwork panels include:

- Several multi-function profiles on tie position allows for preattaching accessories in a gang-form application
- All accessories are attached to the welded-in Dywidag threads on the multi-function profile
- Walkway brackets equipped with a pin that locks in the safe position



Multi-function profile

Made from Plate steel profiles with multi holes for rapid, consistent connection of accessories

Tie hole

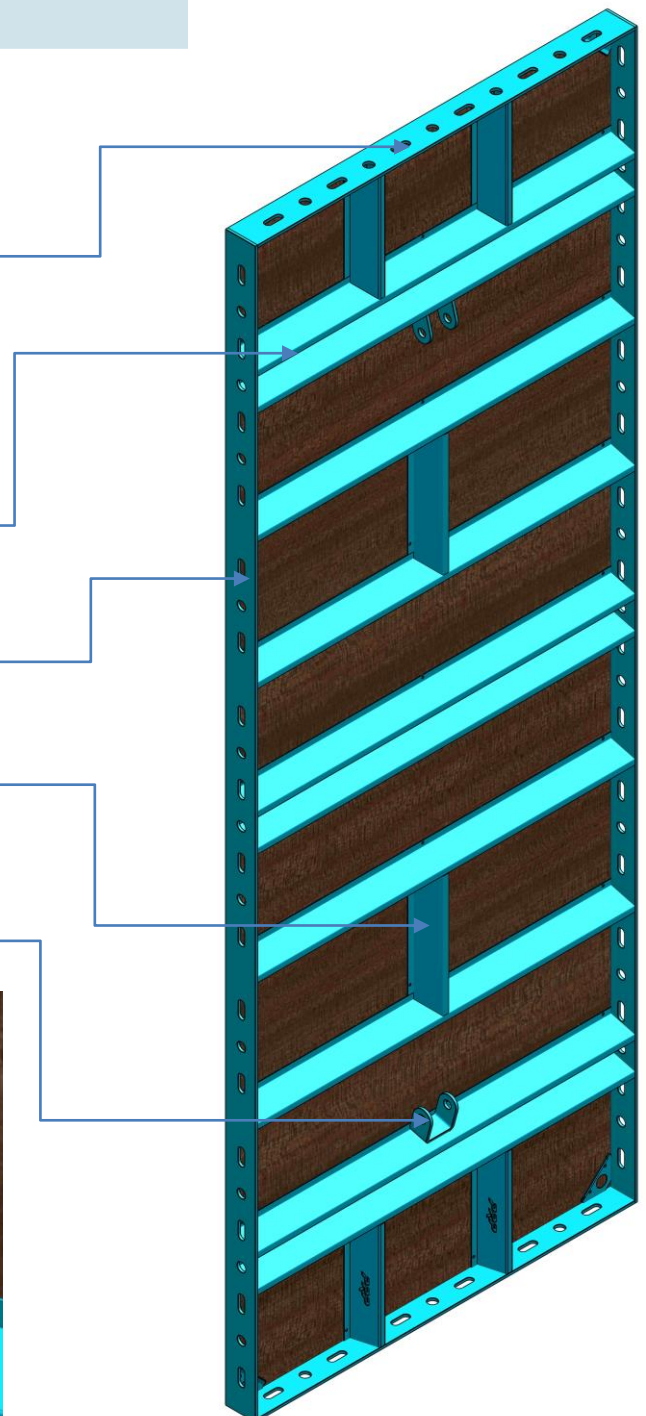
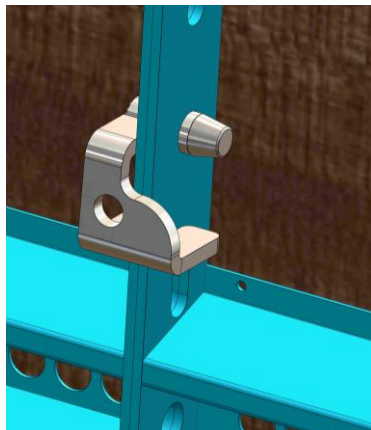
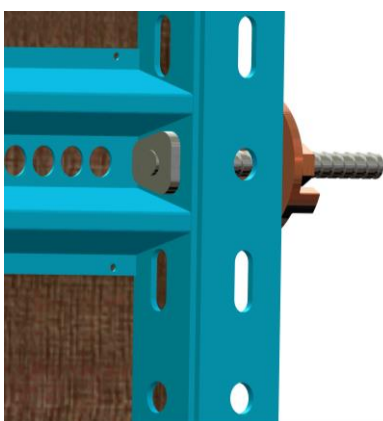
With suitable all panel easily fitment.

Tie Rib

Rib Made by high grade steel for extra support for ply.

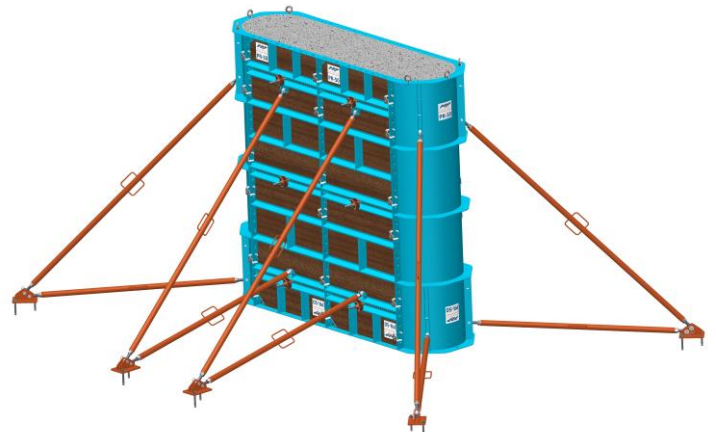
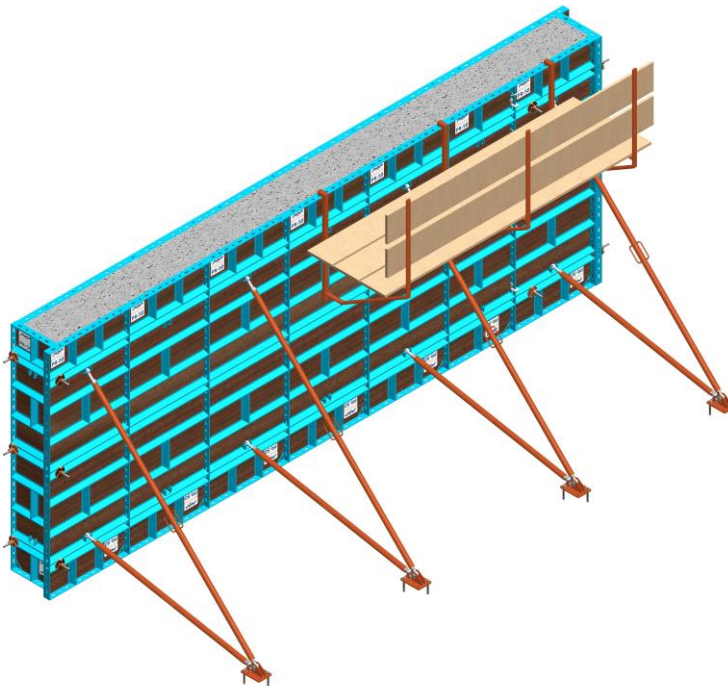
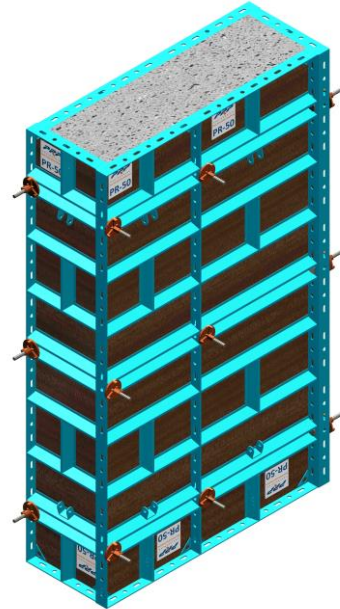
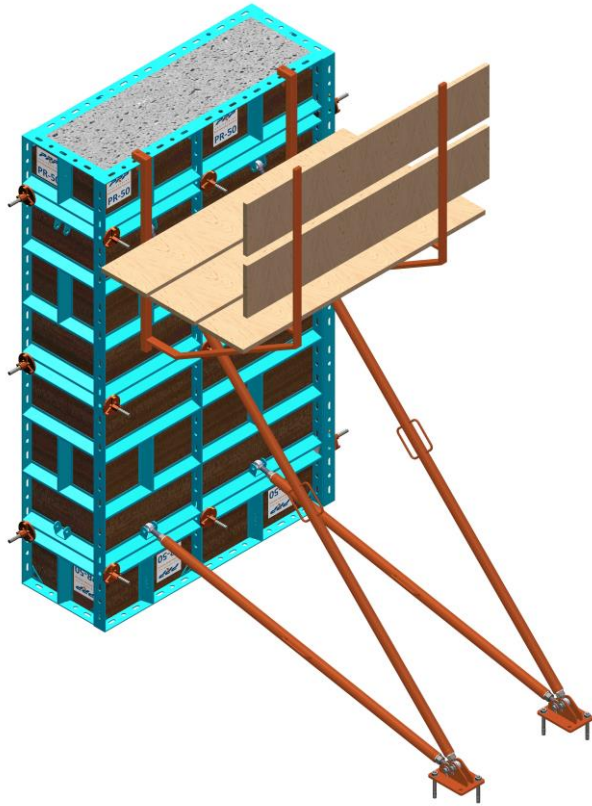
Hinge Bracket

Provided hinge bracket on Top & Bottom side for extra tie support at wall height taller.

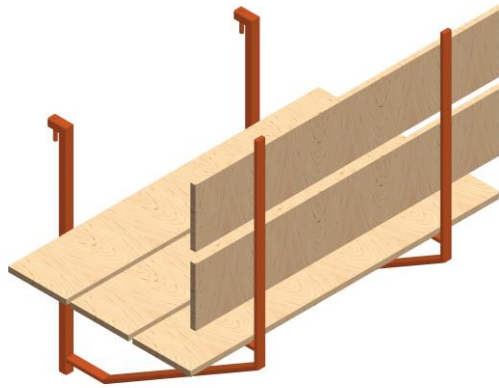
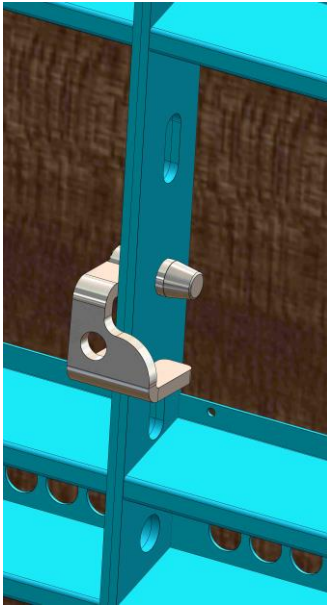


PR-50 PANEL SYSTEM

Panel Dimensions



Panel Connection



Handle Lock	Concreting Platform	Corner Connector
- Panel Connection	- Concreting purposes	- To form 90° angle
- Easy & Simple	- Easy & Simple	- Easy & Simple

PR-50 Panel Weight:

PR-50 Panel 2.40m x 0.90m = 61 Kg.	PR-50 Panel 1.20m x 0.90m = 34 Kg.
PR-50 Panel 2.40m x 0.75m = 53 Kg.	PR-50 Panel 1.20m x 0.75m = 29 Kg.
PR-50 Panel 2.40m x 0.60m = 45 Kg.	PR-50 Panel 1.20m x 0.60m = 25 Kg.
PR-50 Panel 2.40m x 0.45m = 38 Kg.	PR-50 Panel 1.20m x 0.45m = 20 Kg.
PR-50 Panel 2.40m x 0.30m = 29 Kg.	PR-50 Panel 1.20m x 0.30m = 15 Kg.
PR-50 Panel 1.50m x 0.90m = 41 Kg.	PR-50 Corner 2.4m x 0.30 x 0.30 = 33 Kg.
PR-50 Panel 1.50m x 0.75m = 35 Kg.	PR-50 Corner 1.5m x 0.30 x 0.30 = 25 Kg.
PR-50 Panel 1.50m x 0.60m = 29 Kg.	PR-50 Corner 1.2m x 0.30 x 0.30 = 20 Kg.
PR-50 Panel 1.50m x 0.45m = 24 Kg.	
PR-50 Panel 1.50m x 0.30m = 18 Kg.	



PRP ENGINEERING PVT. LTD.

Head Office : Plot No.117, Por Industrial Park, Behind Sahyog Hotel Por GIDC, Vadodara Gujarat 391243 (Gujarat) INDIA.

Mob. : New Enquiry - +91 96382 50774 **Email :** sales@prpindia.in

Branch Office : New Delhi | Bangalore | Hyderabad | Chennai | Kolkata | Pune | Mumbai | Ahmedabad | Odisha

Domestic Dealers : Surat | Nashik | Indore | Cochin | Jaipur | Patna | Raipur | Kerala